

OFF-HIGHWAY & CONSTRUCTION



www.baileymorris.co.uk

About Bailey Morris

Established in 1977, Bailey Morris Ltd is the U.K's foremost specialist propshaft company. With facilities in both Cambridgeshire and West London (Feltham), we can ensure that our extensive stock provides the widest choice of leading brand products sourced from the world's foremost original equipment component manufacturers.

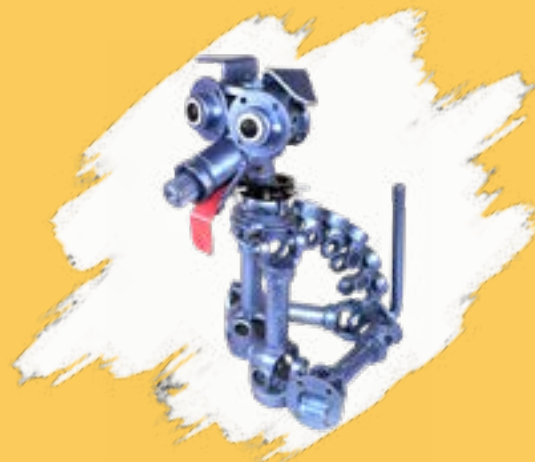
Manufacturing

- Wide range of propshafts for all applications. HGV, LCV, classic car, motorsport, 4x4, engine test cells, industrial, marine, off-highway and construction
- Flexible capacity caters for single shafts and batch work
- Service includes new propshafts, repairs, remanufacture, modification and upgrades
- Original equipment, aftermarket and custom build options
- 'All-Makes' propshaft programme

Distribution

- Comprehensive stock range covering 'All-Makes' propshafts and components
- Fast and efficient distribution service covering the U.K. and worldwide
- Original equipment and aftermarket options available
- Centre bearings, universal joints, flange yokes, slip-assemblies, coupling flanges and propshaft specification tube
- No minimum order quantities

***"We Offer Our Clients
a Swift, Flexible and
Positive Response to
Their Requirements"***



Our Manufacturing Facility...



Our new fully
enclosed spray
booth facility...

One of our fully
automated welding
machines...



Off-Highway & Plant Equipment

Overview

We endeavour to provide our clients with a swift, efficient, flexible and cost effective solution for any propshaft application. Bailey Morris Ltd has built its reputation for exceeding customer expectations; achieved by using a combination of high quality parts, controlled manufacturing standards and considerable product knowledge. As a specialist manufacturer we provide a service for a diverse range of applications including automotive, commercial, off-highway and industrial applications. As part of our technical service we offer guidance on appropriate shaft recommendations, safe operating speeds and anticipated life-expectancy calculations



“We offer our clients a swift, flexible and positive response to their requirements”

Applications

Bailey Morris Ltd has developed an OESR programme for a number Off-Highway vehicles from a variety of makes. From universal joints to complete propshafts, Bailey Morris Ltd provide the complete solution for propshaft application on construction equipment. In addition, a full repair, recondition and remanufacture service is available from our both our sites in Cambridgeshire and West London.

- Volvo Construction Equipment
- JCB
- Caterpillar
- Terex
- Komatsu
- Bell Equipment

Distribution

Our comprehensive stock range enables us to provide a fast and efficient parts distribution service, covering the U.K., Europe and Worldwide. We source from all of the world’s major components manufacturers, and we stock both original equipment and high-quality aftermarket products. Our extensive inventory includes the following industry leading and widely recognised brand names; Klein, DANA Spicer, Sicit, GWB, GKN, Hardy Spicer, GMB, Matsuba, Elbe, Elso Gewes, Kempf and Tirsan Kardan.

Product Benefits – Bailey Morris

We stock a broad range of centre bearings, universal joints, flange yokes, weld yokes, slip-assemblies, splined mid-stubs, coupling flanges and propshaft specification tube. Whether your needs are for an urgent° VOR (Vehicle-Off-Road) requirement, small scale ordering or for wholesale stocking purposes, our sales team can help with your individual requirement.

Popular items are often available from stock on either new or service exchange basis. With our comprehensive facility for preparation, assembly, welding, straightening, dynamic balancing and finishing propshafts, we are able to offer the complete service for any

Product Range

From SAE 0500 series to 1900 series flanged

Open Yoke and half round design including Scania style

DIN 58mm flange to 250mm inclusive

(KV) cross tooth 120mm to 208mm

Japanese/Asian type shafts

Specialist dynamometer and engine test cell shafts

Flexible drive couplings, Precision Cardan Shafts, Cross Cardan Shafts, SHaft Ball & Socket Shaft



“Our New VOR line is Now Live!”



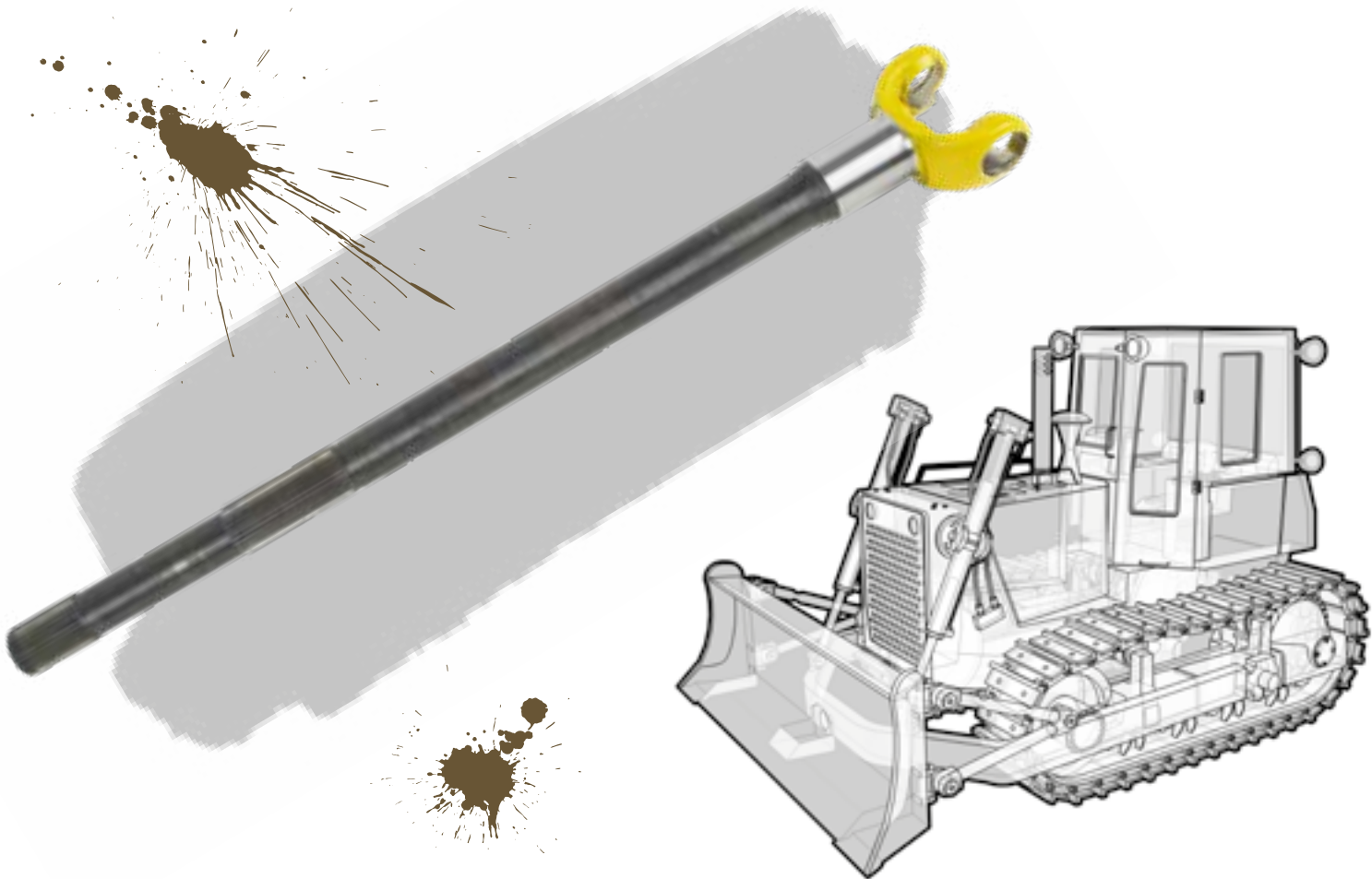
Steeraxle Shaft

Part Number	Bailey Morris Part Number	Description
914/89300	BMSA330/5	STEERAXLE L.988.3MM
914/89400		STEERAXLE L.1051MM
914/60109		STEERAXLE L.1051MM (Replaced by 914/M0343)
914/M0343		STEERAXLE L.1051MM
914/88100	call sales office	STEERAXLE L.1275MM
914/88200		STEERAXLE L.825MM
914/87800		STEERAXLE L.1240.1MM
914/87900		STEERAXLE L.790MM
914/88800		STEERAXLE L.801MM
914/88900		STEERAXLE
914/90540		STEERAXLE L.1050MM
914/60103		RIGID AXLE SHAFT (Also 914/M4448)
914/90640		STEERAXLE L.988MM
914/87400		STEERAXLE L.1354MM
914/87500	BMSA320/1	STEERAXLE L.854MM
914/89500	BMSA330/1	STEERAXLE L.1287.6MM
914/89800	BMSA330/2	STEERAXLE L.816.9MM
	BMSA330/3	
	BMSA330/4	



Axle Yoke

OEM Part Number	Bailey Morris Part Number	Description
914/89501	YS330/6	AXLE YOKE L.240MM
914/86602		AXLE YOKE L.730MM
914/70042		AXLE YOKE L.667.3MM
914/87401		AXLE YOKE L.292MM
914/84202	YS330/1	AXLE YOKE L.480MM
914/70078		
914/86204		AXLE YOKE L.960MM
914/86301		AXLE YOKE L.514MM
914/80101	YS330/2	AXLE YOKE L.925.6MM
914/80202		AXLE YOKE L.475.5MM
914/88101		AXLE YOKE L.243MM
		AXLE YOKE L.245MM (Replaces 914/87801)
914/70046	YS24.1	
914/84104	YS330/3	AXLE YOKE L.976MM
914/84501	YS330/4	AXLE YOKE L.966.6MM
914/84601	YS330/5	AXLE YOKE L.495MM
914/70048		AXLE YOKE L.674MM



Centre Yoke

OEM Part Number	Bailey Morris Part Number	Description
914/C3933	B310HC/1	CENTRE YOKE H=62MM
914/86203	B320HC/1	CENTRE YOKE H=72MM
914/83304	B320HC	CENTRE YOKE H=70MM
914/86403	B330HC	CENTRE YOKE H=81MM



Universal Joint Kits

OEM Part Number	Bailey Morris Part Number	Description
332/C3931	BM255A	UNIVERSAL JOINT (SEALED-FOR-LIFE)
914/86601	BM692S	UNIVERSAL JOINT (RE-LUBE)
914/86402	BM225A	UNIVERSAL JOINT (SEALED-FOR-LIFE)
914/80207	BM232	UNIVERSAL JOINT (RE-LUBE)
914/86202	BM256A	UNIVERSAL JOINT (SEALED-FOR-LIFE)
914/82201	BM217A	UNIVERSAL JOINT (RE-LUBE)
914/10803	BM55	UNIVERSAL JOINT (RE-LUBE)
914/60080	BM300	UNIVERSAL JOINT (SEALED-FOR-LIFE)
914/03402	BM179	UNIVERSAL JOINT (RE-LUBE)
914/35401	BM263	UNIVERSAL JOINT (RE-LUBE)
914/56401	BM440	UNIVERSAL JOINT (RE-LUBE)
914/54303	BM87	UNIVERSAL JOINT (RE-LUBE)
914/30901	BM275	UNIVERSAL JOINT (RE-LUBE)
914/57401	BM103A	UNIVERSAL JOINT (RE-LUBE)
914/23002	BM650	UNIVERSAL JOINT (RE-LUBE)





**Bailey
Morris
Limited**



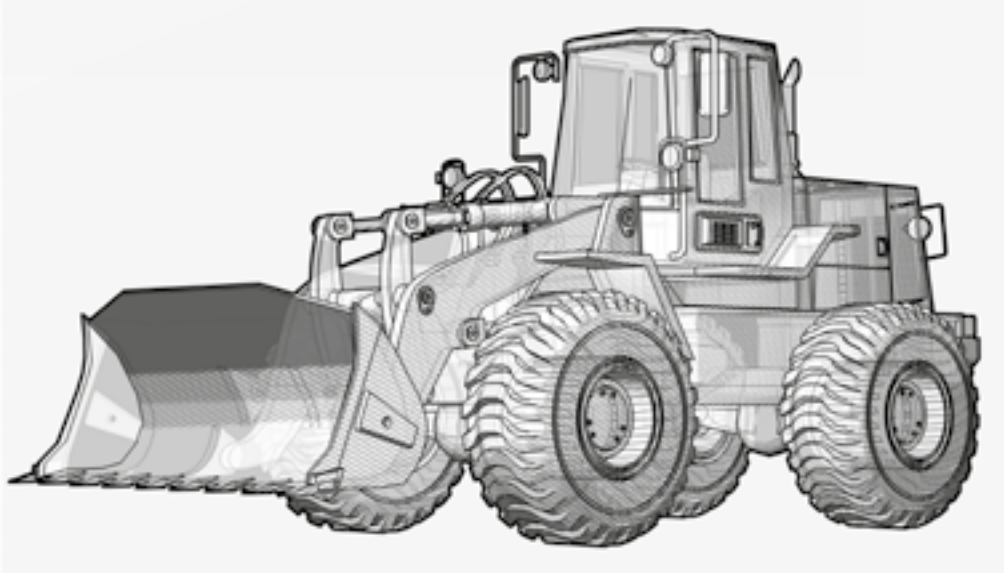
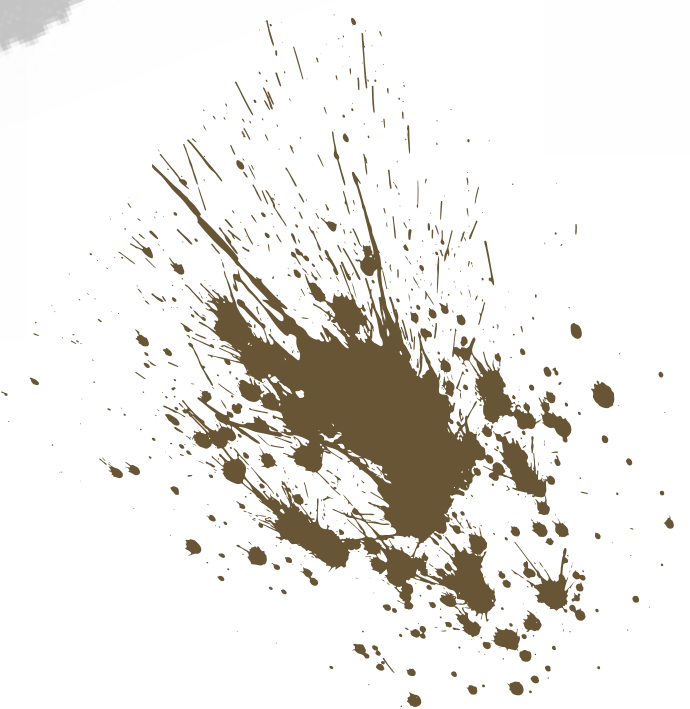
Pump Shaft

OEM Part Number	Bailey Morris Part Number	Description
914/20800		JCB PUMP SHAFT
914/60041	FL-34	JCB PUMP SHAFT
914/37400	31KS-1	JCB PUMP SHAFT
914/31000	31KS-2	JCB PUMP SHAFT
914/35000	31KS-4	JCB PUMP SHAFT
914/60116	31AS-52	JCB PUMP SHAFT
914/60060	31AS-53	JCB PUMP SHAFT



End Yoke

OEM Part Number	Bailey Morris Part Number	Description
914/70045	EY3.2	JCB PUMP SHAFT END YOKE
914/37401	EY3.4	JCB PUMP SHAFT END YOKE
914/30001	EY3.3	JCB PUMP SHAFT END YOKE
914/54201	EY3.20	JCB PUMP SHAFT END YOKE



Flange Yoke

OEM Part Number	Bailey Morris Part Number	Description
914/35001	FY3.5	PUMP SHAFT FLANGE YOKE
914/35502	FY6.2	MAIN DRIVESHAFT FLANGE YOKE
914/35402	FY7.1	MAIN DRIVESHAFT FLANGE YOKE
914/30902	FY10.1	MAIN DRIVESHAFT FLANGE YOKE



Propshafts

OEM Part Number	Bailey Morris Part Number	Description
914/35200	41AS-14	MAIN DRIVESHAFT (FRONT)
914/34600	CALL SALES OFFICE	MAIN DRIVESHAFT (REAR)
914/56400	48AS-4	MAIN DRIVESHAFT (FRONT)
914/60182	CALL SALES OFFICE	MAIN DRIVESHAFT (REAR)
914/42300	48AS-6	MAIN DRIVESHAFT (FRONT)
914/60092	48KS-6	MAIN DRIVESHAFT (REAR) - (ALSO 914/36900)
914/60181	48AS-9	MAIN DRIVESHAFT (FRONT)
914/60265	48KS-8	MAIN DRIVESHAFT (REAR)
914/60096	48AS-7	MAIN DRIVESHAFT (FRONT)
914/56500	55KS-4	MAIN DRIVESHAFT (REAR)
993/81100	48AS-8	MAIN DRIVESHAFT (FRONT)
914/60117	48AS-10	MAIN DRIVESHAFT (FRONT)
914/60255	55KS-5	MAIN DRIVESHAFT (REAR)
914/49100	48AS-16	MAIN DRIVESHAFT (FRONT)
914/60223	CALL SALES OFFICE	MAIN DRIVESHAFT (REAR)
914/39000	48AS-5	MAIN DRIVESHAFT (FRONT)
914/38100	CALL SALES OFFICE	MAIN DRIVESHAFT (REAR)
914/60095	48KS-7	MAIN DRIVESHAFT (REAR) - (ALSO 914/60187)
914/60183	55KS-3	MAIN DRIVESHAFT (REAR)
914/60176	SPL90GL-4	MAIN DRIVESHAFT (FRONT)
914/60086	SPL90AS-3	MAIN DRIVESHAFT (MIDDLE)
914/60167	55KS-2	MAIN DRIVESHAFT (REAR)
914/60263	55KS-6	MAIN DRIVESHAFT (REAR)
914/32600	CALL SALES OFFICE	MAIN DRIVESHAFT (FRONT) - SPECIAL SHAFT W/CVJ
914/34000	CALL S/O	MAIN DRIVESHAFT (REAR)
914/34200	CALL S/O	MAIN DRIVESHAFT (REAR)
914/41000	CALL S/O	MAIN DRIVESHAFT (FRONT)
914/31700		MAIN DRIVESHAFT (MIDDLE) - SPEACIAL SHAFT W/CVJ
914/34200	CALL S/O	MAIN DRIVESHAFT (REAR)
914/48700	55AS-8	MAIN DRIVESHAFT (FRONT)
914/44600	55AS-20	MAIN DRIVESHAFT (REAR)
914/48100	55AS-9	MAIN DRIVESHAFT (POWER TAKE OFF)
914/57300	2030AS-34	MAIN DRIVESHAFT (FRONT)
914/56700	2030AS-27	MAIN DRIVESHAFT (REAR)
914/57200	2030AS-35	MAIN DRIVESHAFT (FRONT)
914/45600	CALL S/O	MAIN DRIVESHAFT (FRONT)
914/45700	48KS-3	MAIN DRIVESHAFT (REAR)
914/46000	48KS-12	MAIN DRIVESHAFT (REAR)

Propshafts

JCB Part Number	Bailey Morris Part Number	Description
914/45200	55AS-13	MAIN DRIVESHAFT (FRONT)
914/44600	55AS-20	MAIN DRIVESHAFT (REAR)
914/51700	55AS-11	MAIN DRIVESHAFT (POWER TAKE OFF)
914/47800	55GL-8	MAIN DRIVESHAFT (FRONT)
914/47900	55AS-21	MAIN DRIVESHAFT (MIDDLE)
914/44100	55AS-17	MAIN DRIVESHAFT (REAR)
914/47500	55GL-9	MAIN DRIVESHAFT (FRONT)
914/47600	55AS-22	MAIN DRIVESHAFT (MIDDLE)

JCB Part Number	Bailey Morris Part Number	Description
914/47700	55KS-8	MAIN DRIVESHAFT (REAR)
914/45300	55AS-23	MAIN DRIVESHAFT (FRONT)
914/42000	55AS-	MAIN DRIVESHAFT (REAR)
914/41900	55AS-24	MAIN DRIVESHAFT
333/G3575	333/G3575	MAIN DRIVESHAFT
914/57000	55AS-12	MAIN DRIVESHAFT (POWER TAKE OFF)
914/33800	CALL S/O	MAIN DRIVESHAFT
914/33900	CALL S/O	MAIN DRIVESHAFT

SPLINE INFO - AWAIT RICH





Sales Account Managers

Sales Manager - Clint Wright
Email - ClintWright@BaileyMorris.co.uk
Direct Phone - 01480 225889

Sales Executive - Stuart Hunt
Email - StuartHunt@BaileyMorris.co.uk
Direct Phone - 01480 225883

Sales Associate - Jazmin Morgan-Smith
Email - JazminMorganSmith@BaileyMorris.co.uk
Direct Phone - 01480 225899

Sales Associate - Andrew Meritt
Email - AndrewM@BaileyMorris.co.uk
Direct Phone - 01480 225894



Service Account Managers

Service - Simon Gentle
Email - SimonGentle@BaileyMorris.co.uk
Direct Phone - 01480 225890

Service - Andrew Evans
Email - AndrewEvans@BaileyMorris.co.uk
Direct Phone - 01480 225895



Check Out our other brands, Heritage & Speed and EXTREME!



We are also on Social Media - Don't Forget to Check Us Out!





www.baileymorris.co.uk
+44(0)1480 216250
sales@baileymorris.co.uk

8 Little End Road, St Neots, Cambs,
PE19 8GE